

**November 3, 2022**
**NR: 22-15**

**Luminex's Camp Drilling at Condor North Indicates Thicker, Higher Grades Emerging at Depth;  
5.2 Metres of 15.1 g/t Au Eq**

**Highlights Include:**

- CC22-39 – 5.2m grading 14.61 g/t gold, 37.4 g/t silver for a gold equivalent of 15.06 g/t
- CC22-40 – 5.0m grading 8.92 g/t gold, 36.0 g/t silver for a gold equivalent of 9.35 g/t
- CC22-41 – 9.8m grading 3.40 g/t gold, 30.5 g/t silver for a gold equivalent of 3.76 g/t

**Vancouver, British Columbia – Luminex Resources Corp. (TSXV: LR) (OTCQX: LUMIF)** (the “Company” or “Luminex”) is pleased to announce results from three holes drilled at the Camp deposit, part of the Condor North project area. Drill holes CC22-39, CC22-40 and CC22-41 have enabled the Company to delineate a thicker part of the Camp deposit. The three holes were drilled to infill an area of more widely spaced holes in the lower-central part of the deposit, which formed as composite sheets of mineralized material that dip steeply to the north. This thicker part of the deposit has been defined by intercepts measuring above 10 metres true thickness horizontally, using a 1.0 g/t gold cut-off grade. It comprises an irregular area measuring approximately 200 metres by 200 metres and remains open to expansion to the southeast, northwest and to depth (see Figure 1). Luminex expects these holes to add to the Camp mineral resource.

Luminex is continuing to drill infill and step out holes on the Camp deposit, as well as step out holes at the emerging, nearby Cuyes West and Ruiz structures with two active rigs at Condor North.

**Table 1. Drill intercepts for Camp deposit holes.**

Hole	Azimuth / Dip / Length	From (m)	To (m)	Interval (m)	True Thickness (m)	Au (g/t)	Ag (g/t)	Au Eq (g/t)
CC22-39	30° / -52° / 753.3m	185.0	187.0	2.0	1.00	2.92	8.1	3.02
And		240.0	242.0	2.0	1.00	4.08	28.8	4.42
And		248.0	256.0	8.0	5.00	2.51	10.1	2.63
And		312.0	313.0	1.0	0.60	5.32	35.9	5.75
And		345.0	347.0	2.0	1.00	1.44	6.3	1.52
And		355.0	356.0	1.0	0.50	3.28	2.3	3.31
And		381.8	387.0	5.2	3.00	14.61	37.4	15.06
And		393.0	397.0	4.0	2.20	2.00	21.5	2.25
And		403.0	420.0	17.0	10.50	1.41	15.7	1.60
And		492.0	500.0	8.0	4.65	1.51	10.2	1.63
And		560.0	562.0	2.0	1.20	2.13	13.8	2.30
CC22-40	22° /	194.0	202.0	8.0	4.90	1.79	7.9	1.88
Incl		194.0	196.0	2.0	1.40	5.22	11.7	5.36

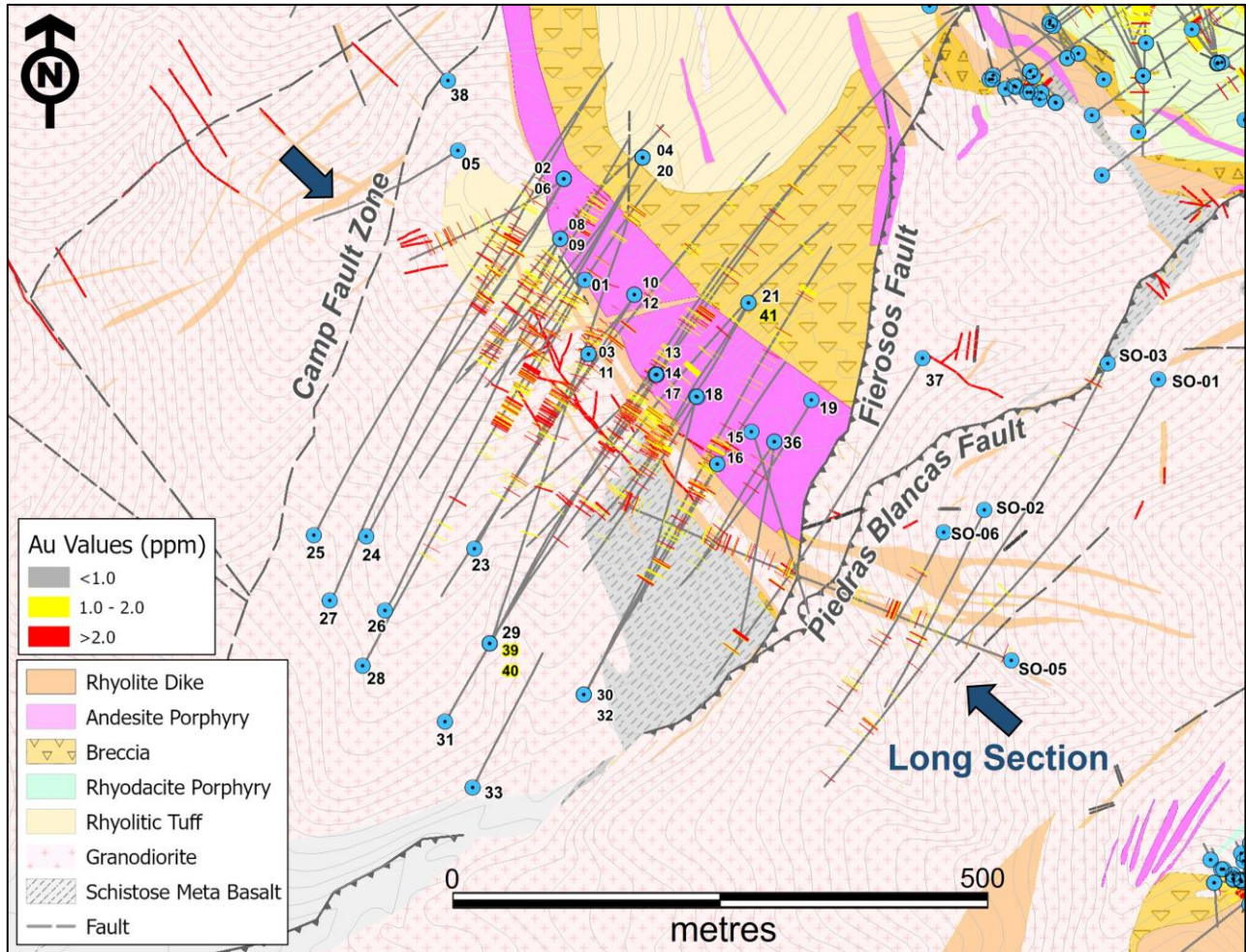
And	-38° / 528.2m	259.7	260.0	0.3	0.25	3.62	63.8	4.39
And		307.0	308.0	1.0	0.70	2.80	36.9	3.24
And		335.0	336.0	1.0	0.70	11.80	25.3	12.10
And		350.0	351.0	1.0	0.70	5.48	15.6	5.67
And		364.0	367.0	3.0	2.10	2.05	14.9	2.23
And		377.0	394.0	17.0	11.90	3.07	25.8	3.38
Incl		384.0	389.0	5.0	3.50	8.92	36.0	9.35
And		448.8	450.0	1.2	0.90	3.78	15.8	3.97
CC22-41	210° / -70° / 720.0m	419.7	431.0	11.3	3.50	1.20	8.2	1.29
And		437.0	458.6	21.6	7.80	2.29	25.3	2.59
Incl		437.0	442.0	5.0	1.80	4.84	19.4	5.07
Incl		453.0	455.3	2.3	0.83	5.45	21.1	5.70
And		465.0	506.8	41.8	13.20	2.17	25.5	2.47
Incl		475.0	477.0	2.0	0.60	4.94	33.3	5.34
Incl		490.0	494.0	4.0	1.26	3.34	35.3	3.76
Incl		497.0	506.8	9.8	3.10	3.40	30.5	3.76
And		558.5	560.2	1.7	0.52	3.32	15.9	3.51

Note: Intervals, except those marked with an asterisk (\*), are calculated using a lower limit of 1.00 g/t Au with a maximum inclusion of up to five continuous metres below cut-off and the highest gold value used in the reported weighted averages is 82.4 g/t Au. AuEq values assume \$1,500 gold and \$18.00 silver (AuEq= Au g/t + (Ag g/t \*0.012). Equivalent values assume 100% recovery of all quoted metals.

Hole CC22-41 intersected the thickest zone of gold mineralisation, 41.8m grading 2.17 g/t gold, 25.5 g/t silver for a gold equivalent of 2.47 g/t, including 9.8m grading 3.40 g/t gold, 30.5 g/t silver for a gold equivalent of 3.76 g/t. The true thicknesses of these intercepts are interpreted to approximately 31% of the core length.

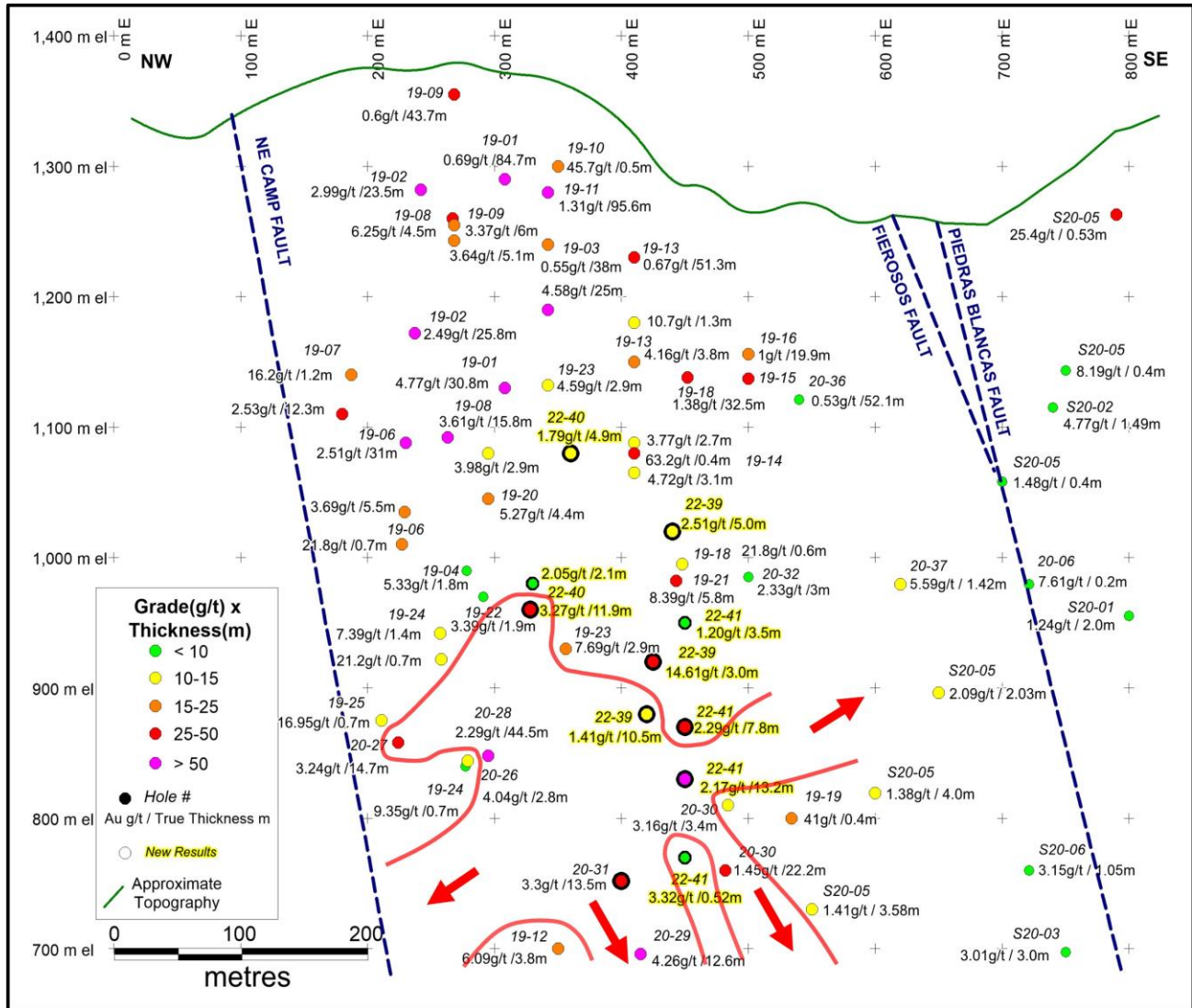
Holes CC22-39 and CC22-40 also contained notable intervals such as 5.2m grading 14.61 g/t gold, 37.4 g/t silver for a gold equivalent of 15.06 g/t in hole CC22-39 and 5.0m grading 8.92 g/t gold, 36.0 g/t silver for a gold equivalent of 9.35 g/t in hole CC22-40. The true thicknesses of these intervals are estimated to be 57% and 70% of the core length respectively.

**Figure 1. Geological plan map of Camp deposit showing location of vertical longitudinal sections displayed in Figure 2.**





**Figure 2. Longitudinal vertical sections of the Camp deposit showing newly delineated, >10m thick zone in red outline.**



**Quality Assurance**

All Luminex sample assay results have been independently monitored through a quality control / quality assurance (“QA/QC”) protocol which includes the insertion of blind standards, blanks as well as pulp and reject duplicate samples. Logging and sampling are completed at Luminex’s core handling facility located at the Condor property. Drill core is diamond sawn on site and half drill-core samples are securely transported to ALS Laboratories’ (“ALS”) sample preparation facility in Quito, Ecuador. Sample pulps are sent to ALS’s lab in Lima, Peru for analysis where gold content is determined by fire assay of a 50-gram charge with ICP finish. Silver and other elements are also determined by ICP methods. Over-limit samples assaying greater than 10 g/t gold and 100 g/t silver are re-analyzed by ALS using fire assay with a gravimetric finish. Luminex is not aware of any drilling, sampling, recovery or other factors that could materially affect the accuracy or reliability of the data referred to herein. ALS Laboratories is independent of Luminex.

## Qualified Persons

Leo Hathaway, P. Geo, Senior Vice President Exploration of Luminex and the Qualified Person as defined by National Instrument 43-101 *Standards of Disclosure for Mineral Projects*, has reviewed, verified and approved the scientific and technical information concerning the Condor Project in this news release and has verified the data underlying that scientific and technical information.

## About Luminex Resources

Luminex Resources Corp. (TSXV:LR, OTCQX:LUMIF) is a Vancouver, Canada based precious and base metals exploration and development company focused on gold and copper projects in Ecuador. Luminex's inferred and indicated mineral resources are located at the Condor Gold-Copper project in Zamora-Chinchipec Province, southeast Ecuador. Luminex also holds a large and highly prospective land package in Ecuador, including the Pegasus and Orquideas projects, which are being co-developed with Anglo American and JOGMEC respectively.

Further details are available on the Company's website at <https://luminexresources.com/>.

To receive news releases please sign up at <https://www.luminexresources.com/contact/contact-us/>.

Follow us on: [Twitter](#), [LinkedIn](#) or [Facebook](#).

### LUMINEX RESOURCES CORP.

Signed: "**Marshall Koval**"

**Marshall Koval**, CEO and Director

For further information contact:

Scott Hicks

[info@luminexresources.com](mailto:info@luminexresources.com)

T: +1 604 646 1899

*Neither the TSX Venture Exchange nor its Regulation Services Provider (as that term is defined in the policies of the TSX Venture Exchange) accepts responsibility for the adequacy or accuracy of this news release.*

### Cautionary Note Regarding Forward-Looking Information

*Certain statements and information herein, including all statements that are not historical facts, contain forward-looking statements and forward-looking information within the meaning of applicable securities laws. Such forward-looking statements or information include, but are not limited to, statements regarding future drilling and work programs at Condor and future changes to the mineral resource estimate at Camp. Often, but not always, forward-looking statements or information can be identified by the use of phrases or statements that certain actions, events or results "will" occur or be achieved.*

*With respect to forward-looking statements and information contained herein, the Company has made numerous assumptions including among other things, assumptions about general business and economic conditions, the prices of gold and copper, and anticipated costs and expenditures. The foregoing list of assumptions is not exhaustive.*

*Although management of the Company believes that the assumptions made and the expectations represented by such statements or information are reasonable, there can be no assurance that a forward-looking statement or information herein will prove to be accurate. Forward-looking statements and information by their nature are based on assumptions and involve known and unknown risks, uncertainties and other factors which may cause the Company's actual results, performance or achievements, or industry results, to be materially different from any future results, performance or achievements expressed or implied by such forward-looking statements or information. These factors include, but are not limited to: risks associated with the business of the Company; business and economic conditions in the mining industry generally; the supply and demand for labour and other project inputs; changes in commodity prices; changes in interest and currency exchange rates; risks relating to inaccurate geological and engineering*

*assumptions (including with respect to the tonnage, grade and recoverability of reserves and resources); risks relating to unanticipated operational difficulties (including failure of equipment or processes to operate in accordance with specifications or expectations, cost escalation, unavailability of materials and equipment, government action or delays in the receipt of government approvals, industrial disturbances or other job action, and unanticipated events related to health, safety and environmental matters); risks relating to adverse weather conditions; political risk and social unrest; changes in general economic conditions or conditions in the financial markets; changes in laws (including regulations respecting mining concessions); and other risk factors as detailed from time to time in the Company's continuous disclosure documents filed with Canadian securities administrators. The Company does not undertake to update any forward-looking information, except in accordance with applicable securities laws.*